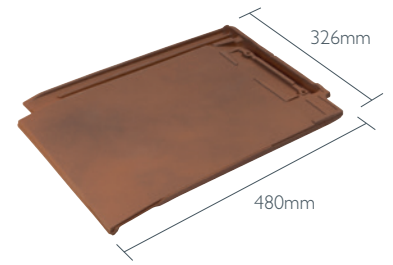




Westminster Slate is a high-performance clay roof covering in a choice of three classic colours.

Westminster Slate, City Black, Clay Universal Angle Ridge, Red South Cemey, Gloucestershire



WESTMINSTER SLATE

An elegant natural clay slate offering savings in both materials and labour. Simple and quick to install.

KEY ADVANTAGES

- Engineered clay slate with hidden interlock
- Tapered leading edge for an exceptionally thin appearance
- For pitches as low as 17.5°

TECHNICAL DATA

| | |
|---|---|
| Size (overall) | 480 x 326mm |
| Minimum Pitch | 17.5° |
| <small>(The minimum pitch is based on a maximum rafter length of 10 metres. For rafter lengths greater than this, please contact the Technical Solutions Hotline on 03708 702595)</small> | |
| Maximum Pitch (subject to fixing specification) | 90° |
| Minimum Headlap | 110mm |
| Maximum Headlap | 140mm |
| Minimum Gauge/Batten Spacing | 340mm |
| Maximum Gauge/Batten Spacing | 370mm |
| Hanging Length (approx) | 452mm |
| Cover (all figures are net and do not allow for wastage) | |
| Linear cover of 1 slate | 280mm |
| Covering capacity | 9.7 slates/m ² at 370mm gauge |
| Weight | |
| 47.5kg/m ² at 370mm gauge | |
| per pallet, including pallet (approx.) | 1.05 tonnes |
| per 1000 | 4.9 tonnes |
| Battens Required (at max. gauge) | |
| | 2.7m ² |
| Batten Size | |
| Rafter centres up to 450mm | 38 x 25mm |
| Rafter centres up to 600mm | 50 x 25mm |
| Fixing Clips | Eaves, Verge & Slate Clips |
| Nail Size for Slates [#] | 55 x 2.65mm (S/S) |
| Pallet Quantities | Slates per pallet 210 / Slates per pack 5 / Packs per pallet 42 |

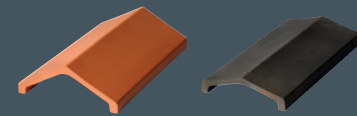
* (S/S) Stainless Steel Annular ring shanked

FITTINGS & ACCESSORIES

| | |
|----------------------------|---|
| Hip | Rosemary Third Round Hip Clay Universal Angle Hip Dry Hip System Continuous Hip System |
| Valley | 125 GRP Valley Dry Valley |
| Ridge | Rosemary Half Round Ridge Clay Universal Angle Ridge |
| Ventilation Systems | RedVent EavesVent RedVent 25 Over-Fascia Vent Rapid Eaves Vent Top Edge Abutment Ventilation DryVent Ridge Continuous Ridge System Uni-Vent Rapid Ridge/Hip 8.8k ThruVent Tile |

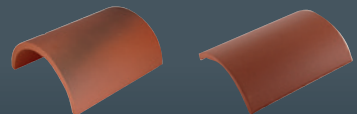
CLAY UNIVERSAL ANGLE RIDGE AND HIP TILES

Both ridges and hips are available in Black and Red

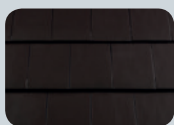


CLAY HALF ROUND RIDGE AND HIP TILES

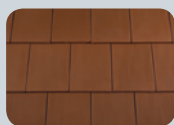
Both ridges and hips are available in Red and Light Mixed Brindle



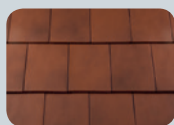
COLOURS



79 City Black



80 Cardinal Red



82 Old College Red